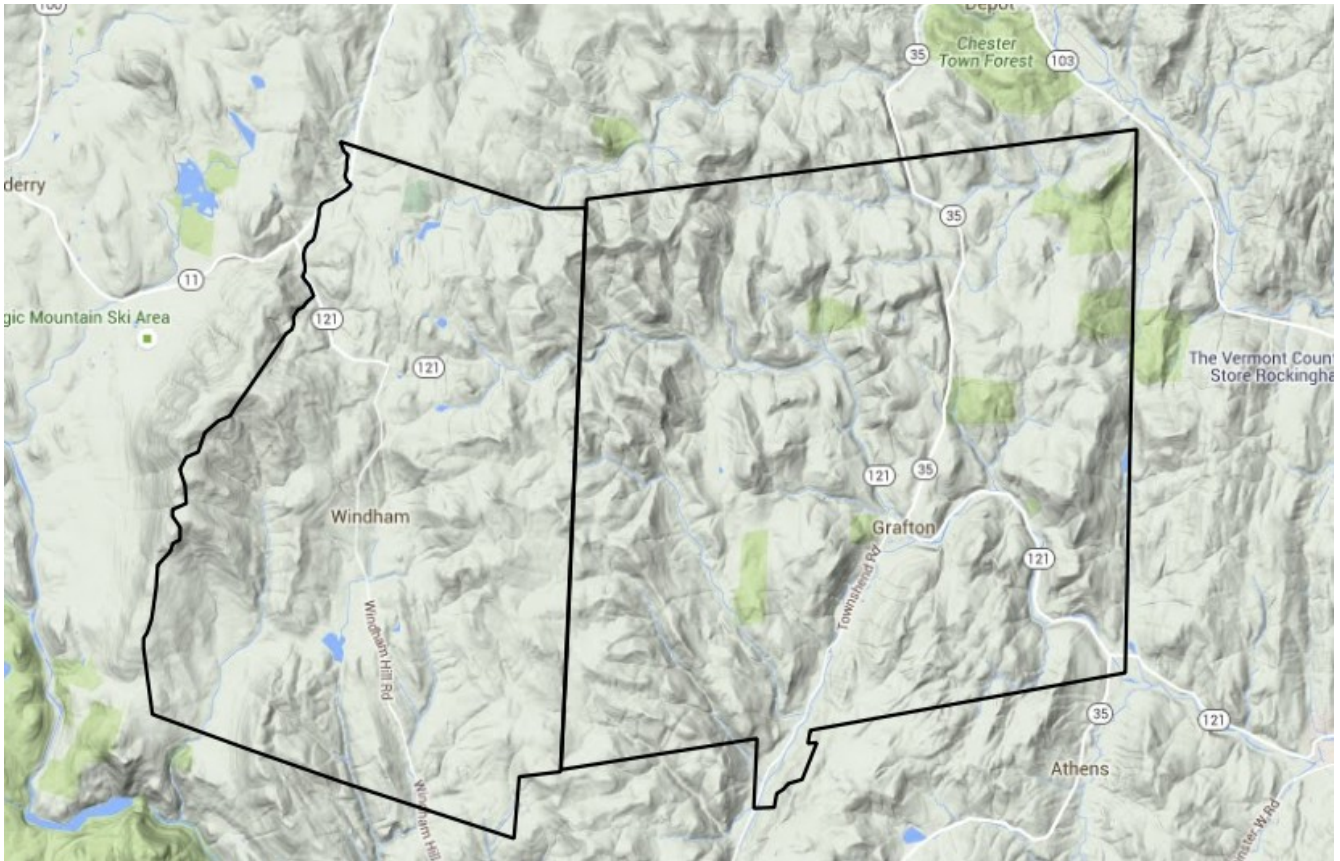
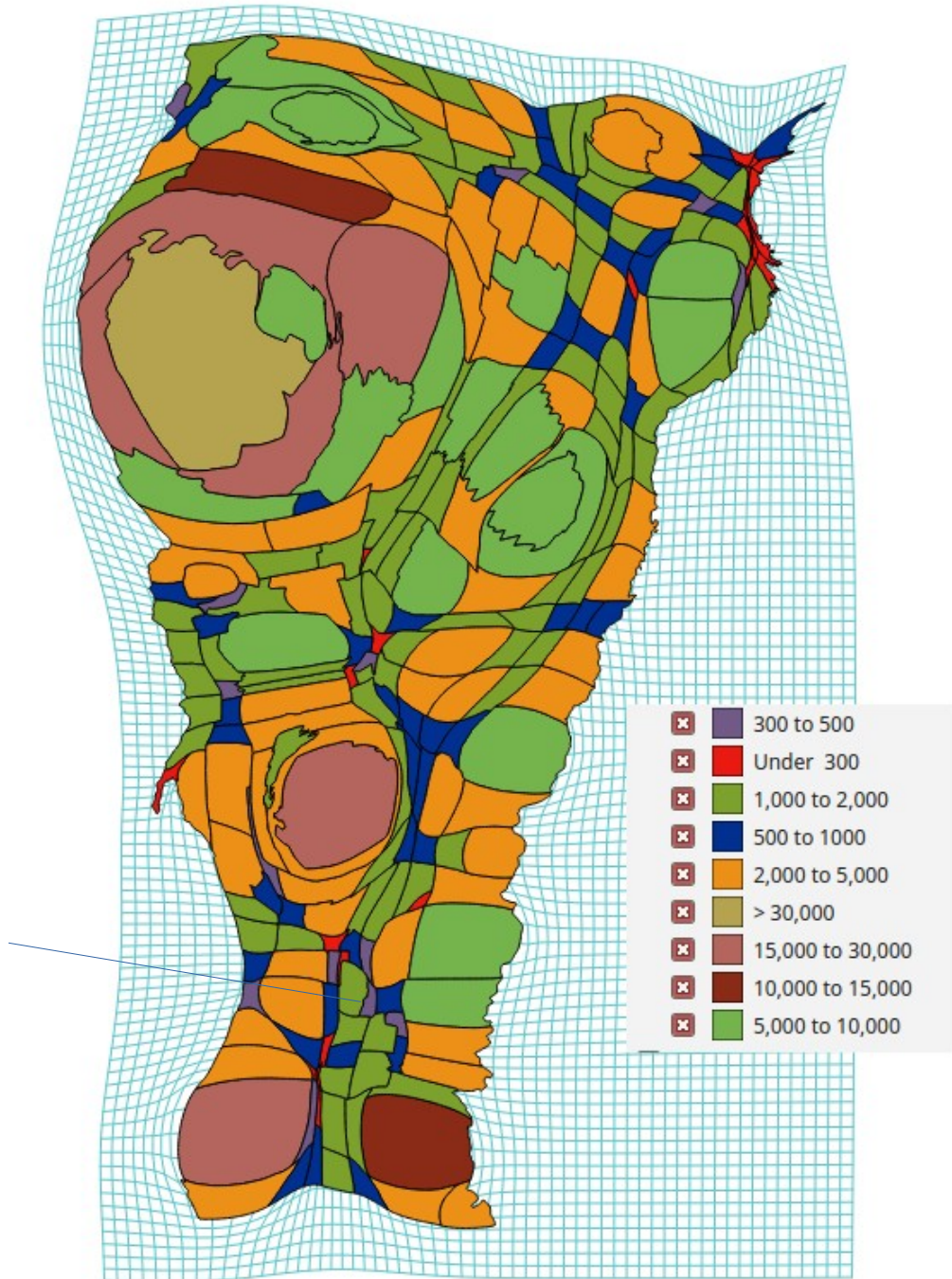


Wind and Water in Windham
Prepared by Frank Seawright of Windham, Vermont
March 22, 2016



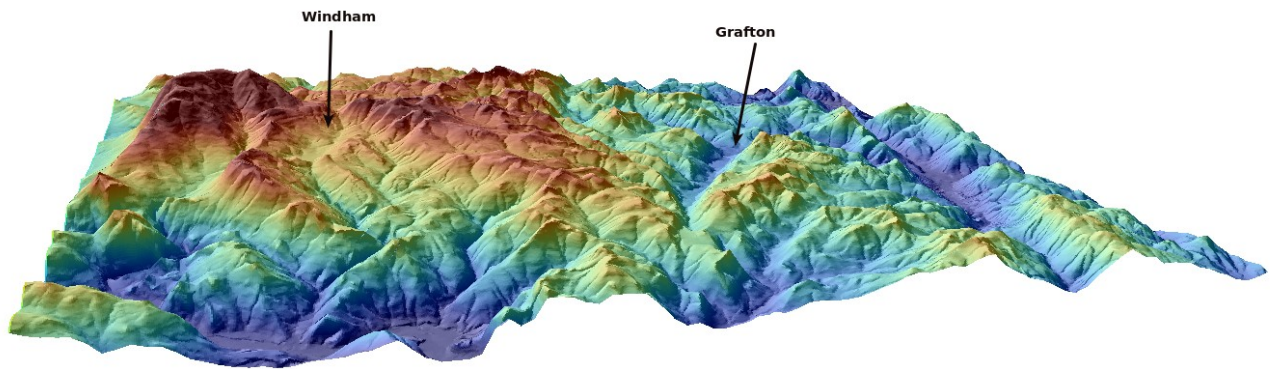
Orientation

Influence



Towns sized relative to population

Terrain of the area

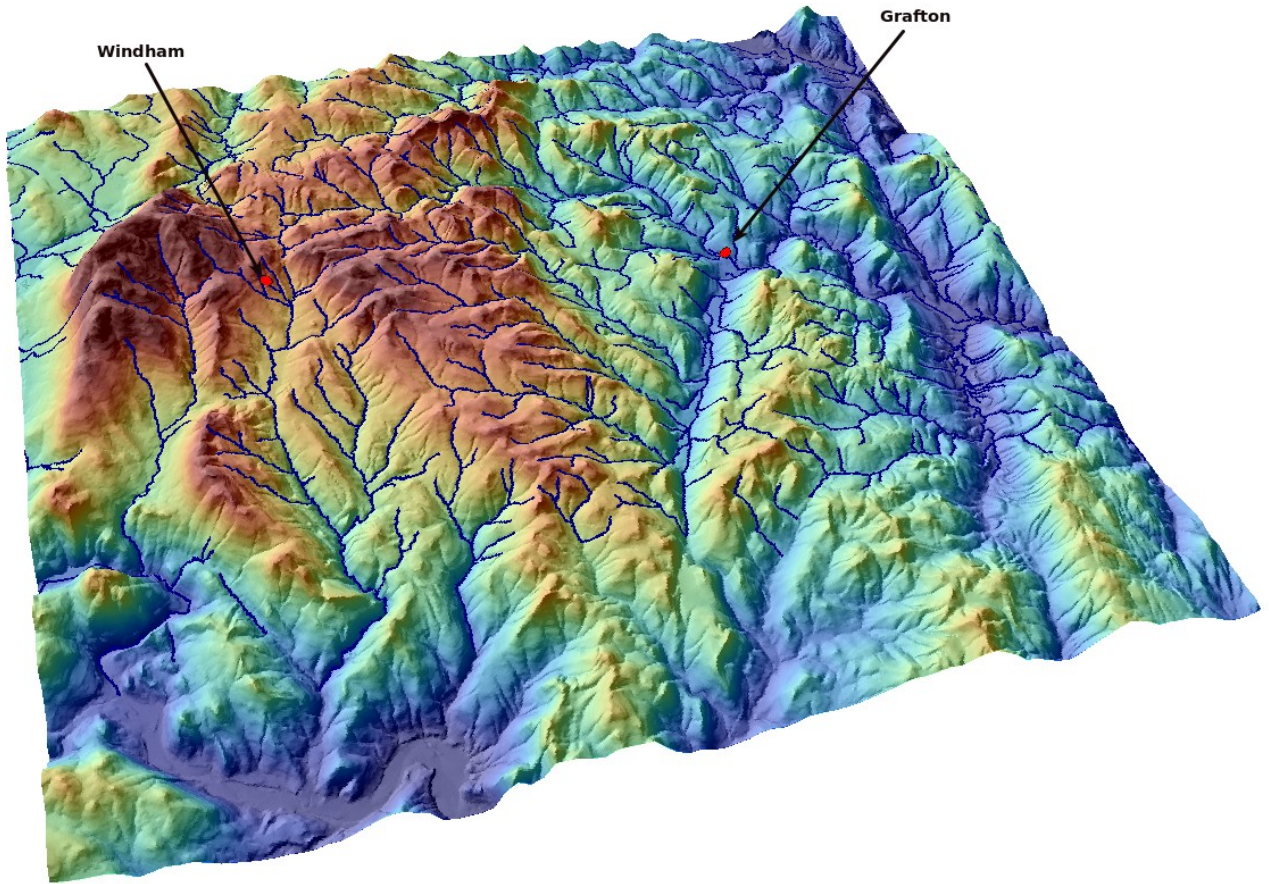


Area shown in first photo tipped down to show the terrain profile.

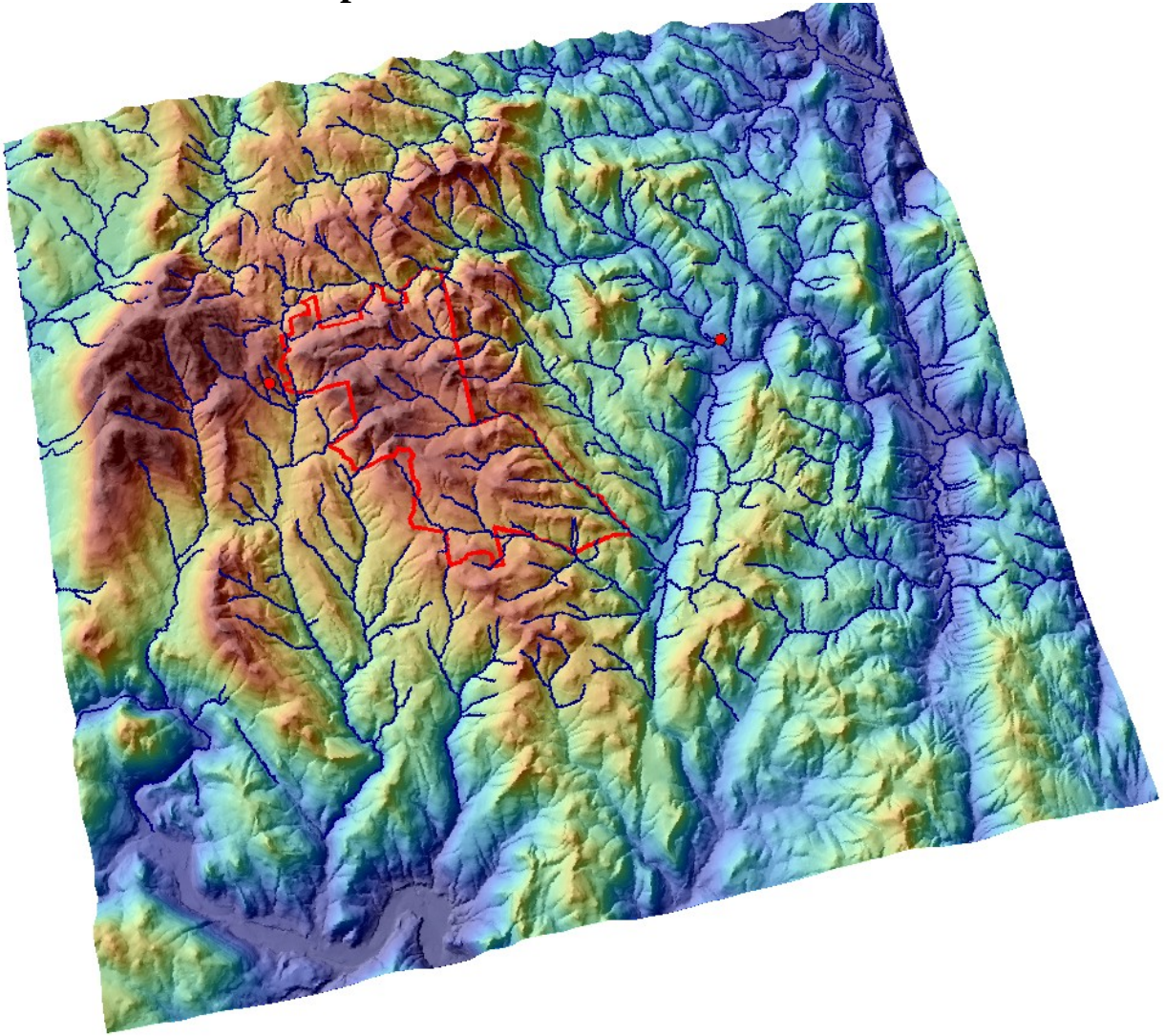


Tipped almost flat to show the profile

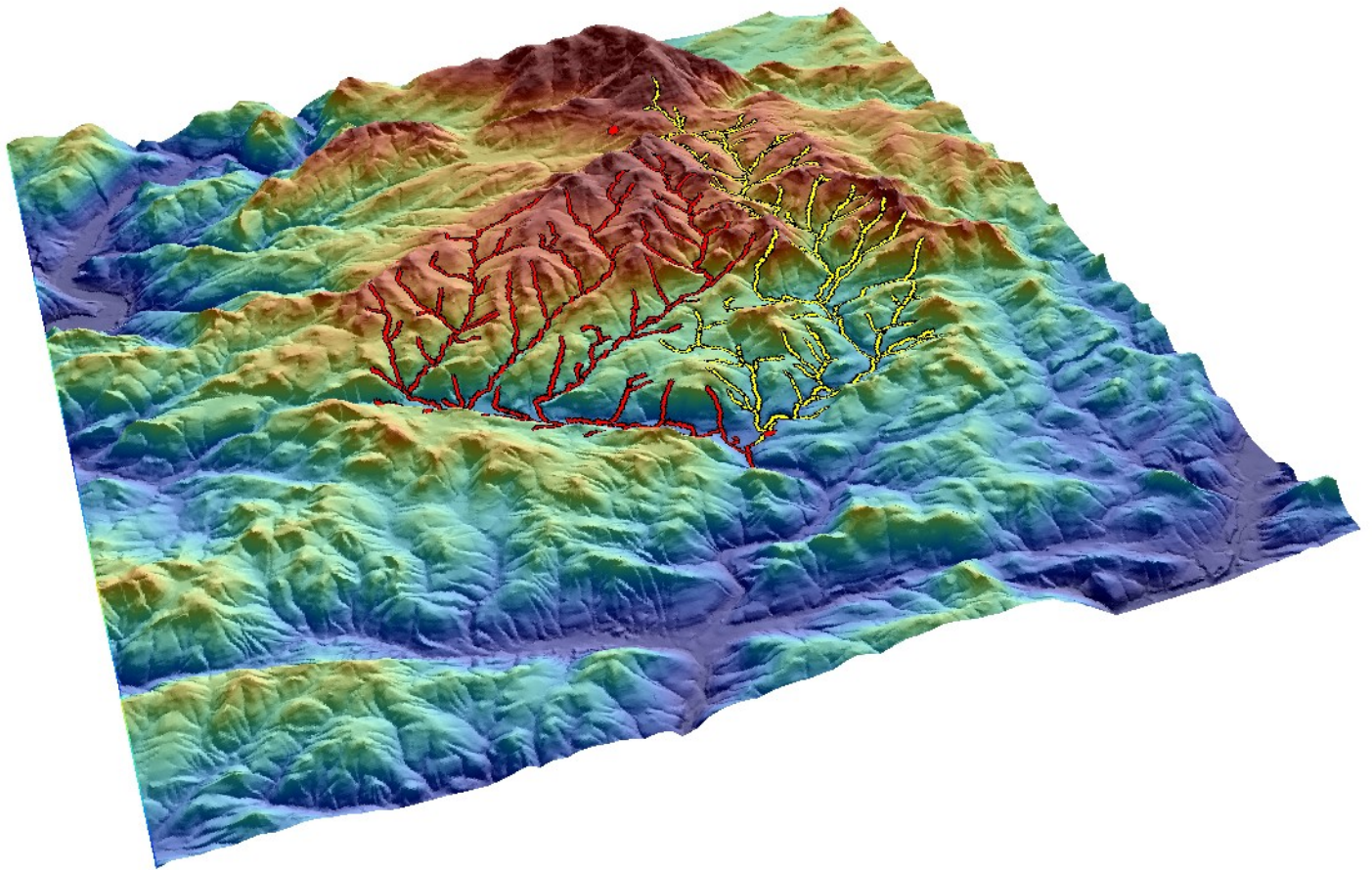
Streams in the area



Proposed wind installation area



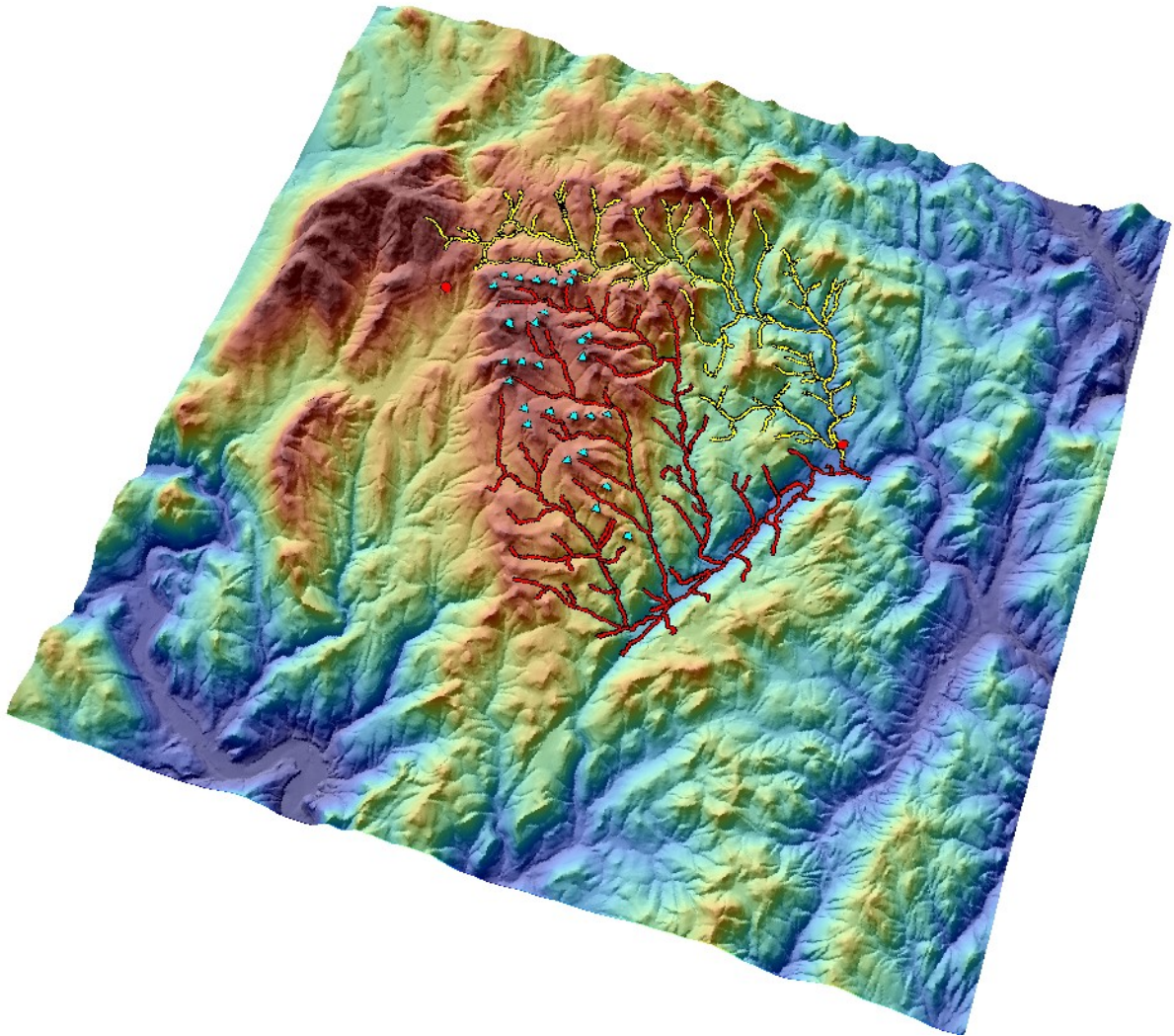
The proposed installation (Stiles Brook tract) shown by red outline



Saxtons River
East to west view to emphasize west to east stream flow
North fork shown in yellow
South fork shown in red

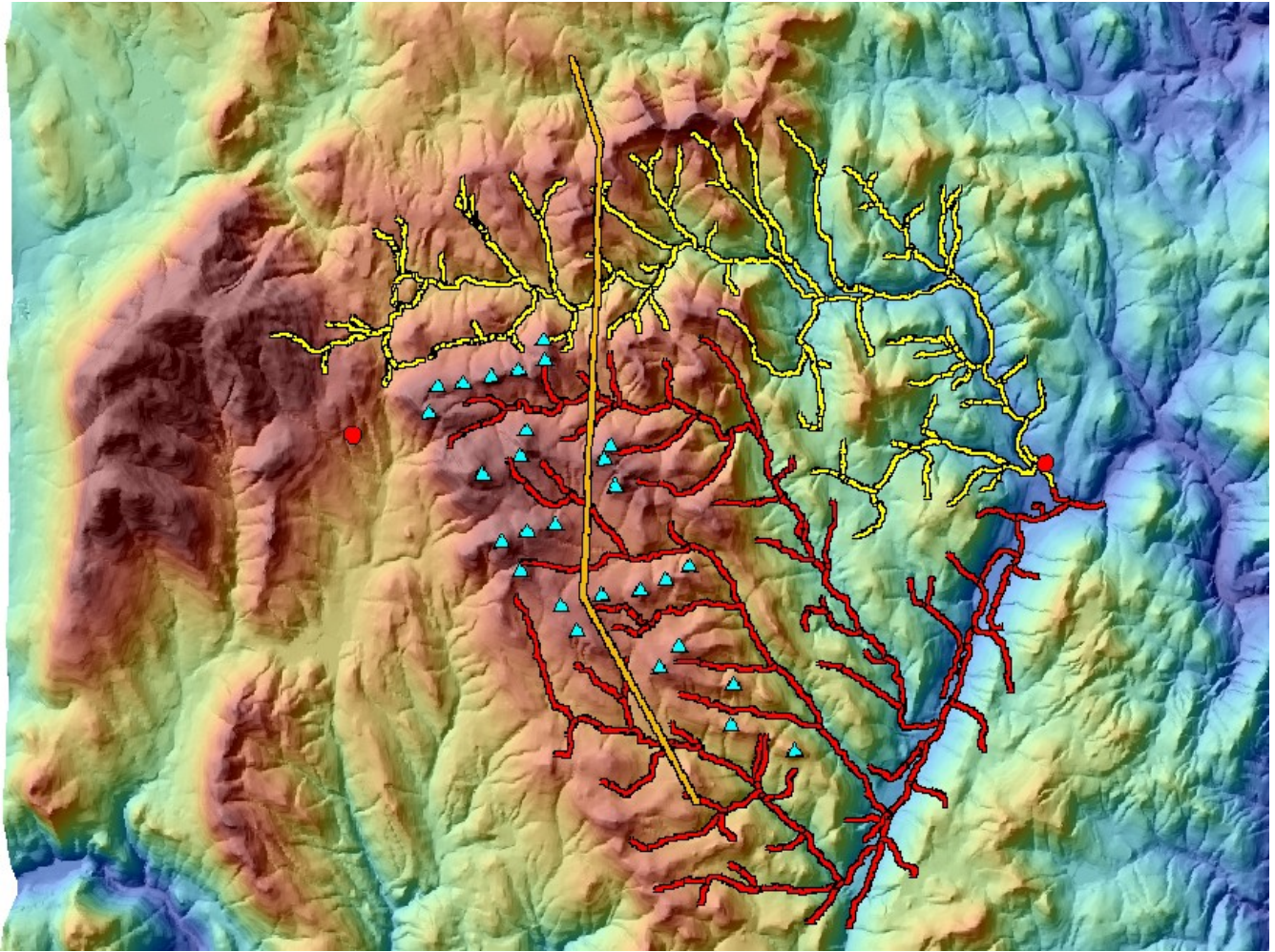
**The south fork is made almost entirely by a network of streams on the Stiles Brook tract.
Those streams converge on the Grafton/Townshend road and flow into Grafton
Grafton has a history of flooding approximately every 7 years**

Turbine locations shown relative to streams



The cyan dots are proposed turbine locations

Notice that all locations assault at least one stream



Many of the slopes on this site are 30% or greater

Other consequences



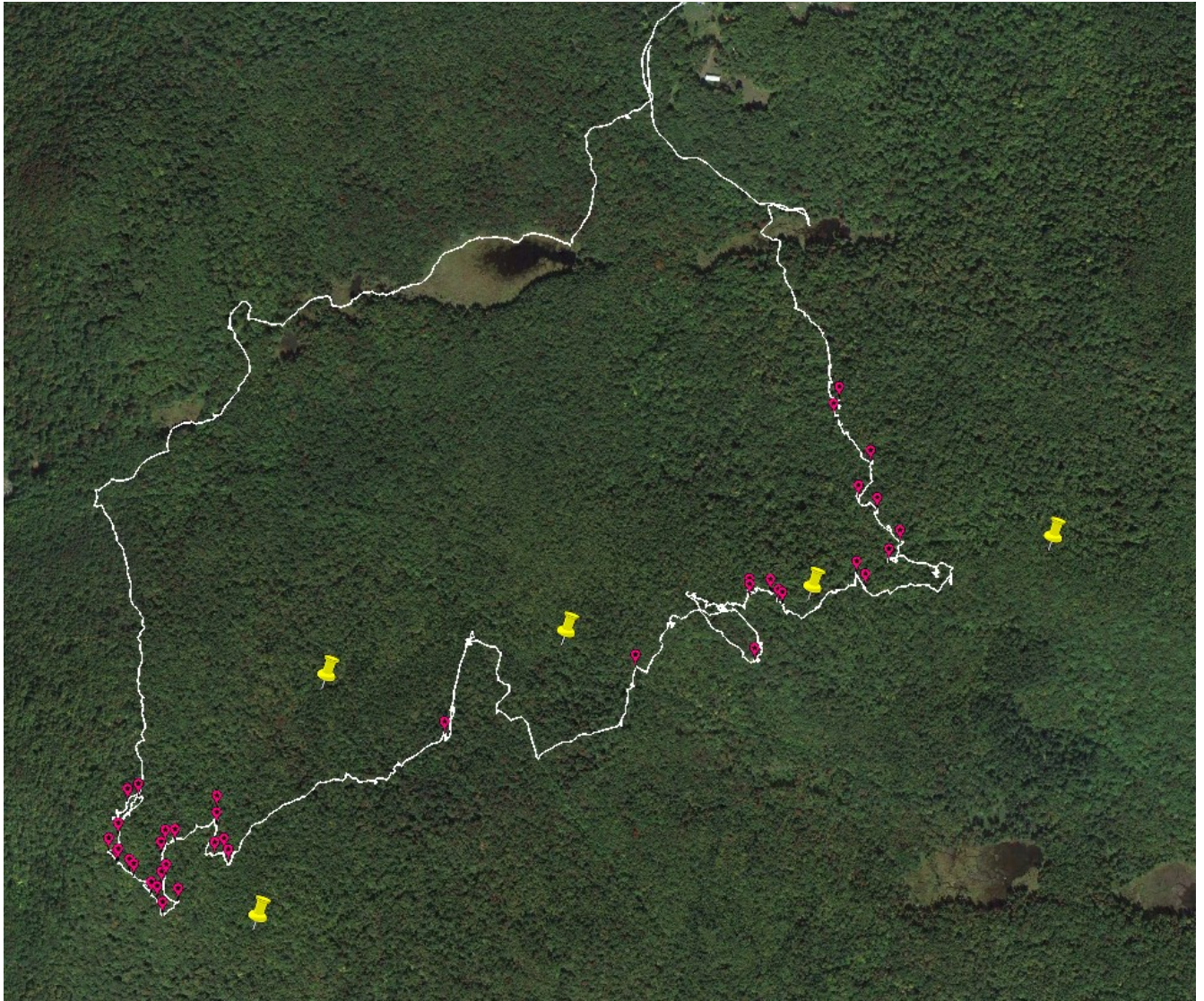
Bear “nest”

Bear Habitat



**White line is GPS track, all but two of the magenta dots are bear “nest”
The two in the middle are a sizable wetland and the westernmost one
appears to be a moose overwintering site**

Bear Habitat with wind turbines



Yellow “push pins” are proposed turbine sites

We ask that the state legislature demand that the next governor appoint a trained, professional environmentalist to lead the Agency of Natural Resources.